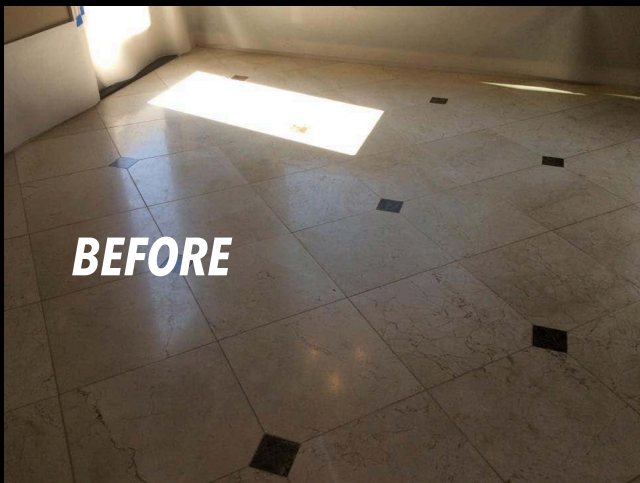


# STONE PRO

# DIAMOND RENEW

## MARBLE & TRAVERTINE POLISHING POWDER



### Works Best on Marble, Travertine & Limestone

- Unique chemical/abrasive formula to achieve the best possible shine, reflectivity and clarity
- Easy to use, rapidly restores gloss and shine
- For use by maintenance and restoration professionals
- Excellent for floors, walls & countertops



SCAN  
TO VIEW  
DEMO  
VIDEO



[www.StoneProOnline.com](http://www.StoneProOnline.com)

## DIAMOND RENEW



### Marble & Travertine Polishing Powder

A mixture of diamond abrasive and polishing compounds that yields the highest possible shine and clarity on marble, travertine and limestone surfaces. Can be used on floors, countertops and walls.

#### For Use On:

Marble, travertine and limestone



SCAN TO  
WATCH  
HOW-TO  
VIDEO

#### FEATURES

- For professional use
- High coverage rate
- Works fast
- Unique chemical/abrasive formula
- Available in 1 lb., 3 lbs., 10 lbs., & 50 lbs.

#### BENEFITS

- 200 - 400 square feet per pound
- Increased productivity
- Removes more damage, adds better clarity while increasing hardness and reflectivity
- Polishes multi-surface floors (marble & granite)

#### Application Instructions:

**1)** Mask-off and protect any areas not being polished with Diamond Renew. **2)** Place approximately 1 teaspoon of Diamond Renew on area to be polished (appx 4 - 6 sq. ft.). **3)** Add clean water to powder to create a slurry paste. **4)** Work paste with low-speed swing machine and a white or hogs-hair pad for 4 - 7 passes. **5)** Add more water to slurry and work machine and pad for an additional 4 - 7 passes. **6)** Once slurry starts to dry, add more water to loosen up the slurry and vacuum up slurry with a wet vacuum (use a soft rubber based nozzle head). **7)** Evaluate results and repeat process if necessary. **8)** Repeat steps 2 - 7 on the section of floor to be polished. **9)** Once all polishing has been completed on the entire floor, neutralize and mop the floor with an Alkaline cleaner (StonePro Deep Clean recommended).